

The principle of complementarity is guiding our common route for development, with the following actors:

- The Public Sector (national, provincial and local)
- The Private Sector (large, medium and small)
- The Social and Solidarity Economy,
- The Academy committed to quality education and innovation,
- The society that acquires goods and services for the good living.

Innovation Zone of the Ecuadorian Coast

ESPOL's project, With support from the National Government, for empowering the development of Guayaquil, the coastal region of Ecuador and the country.



Additional information: Enrique Peláez, Ph.D.

epelaez@espol.edu.ec



ZILE

Innovation Zone of the Ecuadorian Coast

*Innovation
in action*

ESPOL's project for developing and transferring knowledge to empower the productive sector, for creating goods and services with a higher degree of innovation.

At the beginning of this century, ESPOL made a proposal to cope with the financial crisis that Ecuador was facing at that time; a proposal centered on “a new model for regional development, based on knowledge”. The model proposed was based on a double track economy: the traditional track, but enhanced through knowledge, grounded on the assumption that many of the problems were not going to be solved by the market, but through knowledge and innovation, (as the paradigmatic "white spot" case in the shrimp industry, and other cases, such as the cocoa, coffee, bananas, rice, and others); and, the other track, through the knowledge economy, which requires the interaction of different elements; such as, universities of excellence, applied research, technological innovations, public policy, a new kind of businesspersons, technology based companies and entrepreneurs.

About Us

- We are a Public Higher Education Institution (HEI) established in 1958, who practice a responsible autonomy.
- A HEI that has been nationally accredited and always as **Category A**.
- The only Ecuadorian HEI with two engineering careers internationally accredited by **ABET**.
- The only Ecuadorian HEI with a Graduate School of Business Administration internationally accredited by **AACSB**.
- The HEI in the coast that is performing research based education.
- 9 research based Master Programs approved by the national Higher Education Council.
- 2 Ph.D. programs approved by the national Higher Education Council.
- The HEI that proposes pioneering models for a knowledge based development.

This is a project proposed by **ESPOL** that aims to facilitate the transition to a knowledge based economy.
A project that contributes to the transformation of the productive matrix and generates shared wealth.

A project that contributes to the improvement of the Science, Technology and Innovation System of Ecuador, as well as helping improve the quality of the Universities and Polytechnics of the country and the welfare of its citizens.

Research Centers in ZILE

Applied research centers of **ZILE** will generate innovations in science, engineering and new type of businesses with high added-values; transfer technology; and, contribute to solve the country's scientific and technical problems, empowering local, regional and national development.

Impacts

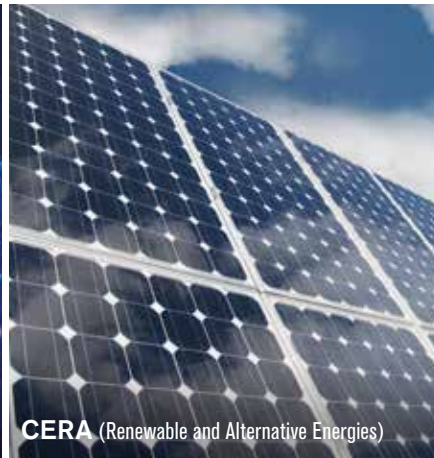
- The impact of having several quality research centers working on **ZILE** will be:
- Wider, because of the diversity in academic domains.
 - Deeper, because of the specificity and relevance of research in terms of the territory.
 - Faster, because of the advance human talent concentrated in these fields.
 - More economical, because the potential will be maximized.



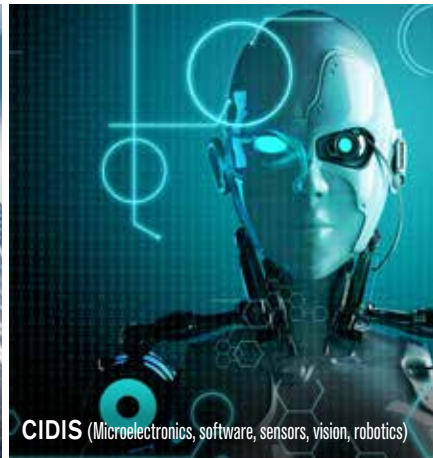
CIBE (Biotechnology Research Center)



CTI (Information Technologies Research Center)



CERA (Renewable and Alternative Energies)



CIDIS (Microelectronics, software, sensors, vision, robotics)



CIDNA (Nanotechnology and New Materials)



CADS (Water, Sustainable Development and Biodiversity)



CENAIM (Aquaculture Research Center)

Now, and because of the opportunities given by the transformation of the Ecuadorian productive and energy matrix, **ESPOL** proposes the creation of the “Innovation Zone of the Ecuadorian Coast” (**ZILE**), as a virtuoso convergence space for making research, education and production relationships work through innovation, applied research and technological disaggregation. An innovation zone that will also include a “Special Economic Development Zone” - **ZEDE**, with emphasis on innovation and production with a high added value and environmentally sustainable.

Where are we located?

In Guayaquil, Guayas and the coastal region of Ecuador. Guayaquil is the biggest economic and populated Ecuadorian city, home of the main seaport of the country, the commercial and financial center of Ecuador, as well as the industrial pole, with great potential for tourist development. Our coastal region has an extraordinary base of resources, which includes the Guayas river basin, the Gulf of Guayaquil, the Galapagos, the marine zone and wetlands which host diverse productive activities with real potential for innovation and creation of wealth.

Because of these resources, the diverse economy and its entrepreneurial residents, the 14 prioritized Ecuadorian industries for the new production matrix have a great potential to be developed.

Purpose of ZILE

- Diversify the regional and local economy.
- Contribute to the transformation of the productive matrix.
- Increase the opportunities for industrial exports.
- Reduce imports.
- Attract advanced human talent.
- Generate formal employment.
- Strengthen the National System of Science Technology and innovation.
- Attract Foreign Direct Investment in different fields.
- Attract National Investment in various fields.
- Allow companies to incorporate highly qualified professionals.
- Improve the quality of graduate programs.
- Reduce the brain drain of the country.
- Position in the national and international markets our Ecuadorian products, through certificates or seals of quality.

Special Economic Development Zone, ZEDE

- With Technological Disaggregation Centers through which:
- The universities and the productive sectors of the Ecuadorian coast will strengthen the competitive and innovative productive matrix.
 - The human talent and vocation in applied research and innovation can be promoted; technical and managerial training can be specialized in R&D+i; inter-sectorial mobility with universities can be carried out; as well as, retention of advanced human talent can be accomplished.

Investment in Advanced Human Resource

- The plan for incorporating advanced human talent and world-class researchers is also a basic condition for **ZILE** to fulfill its purpose.

